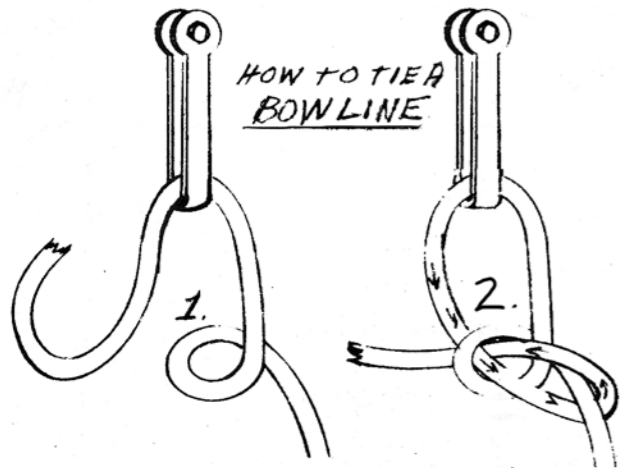
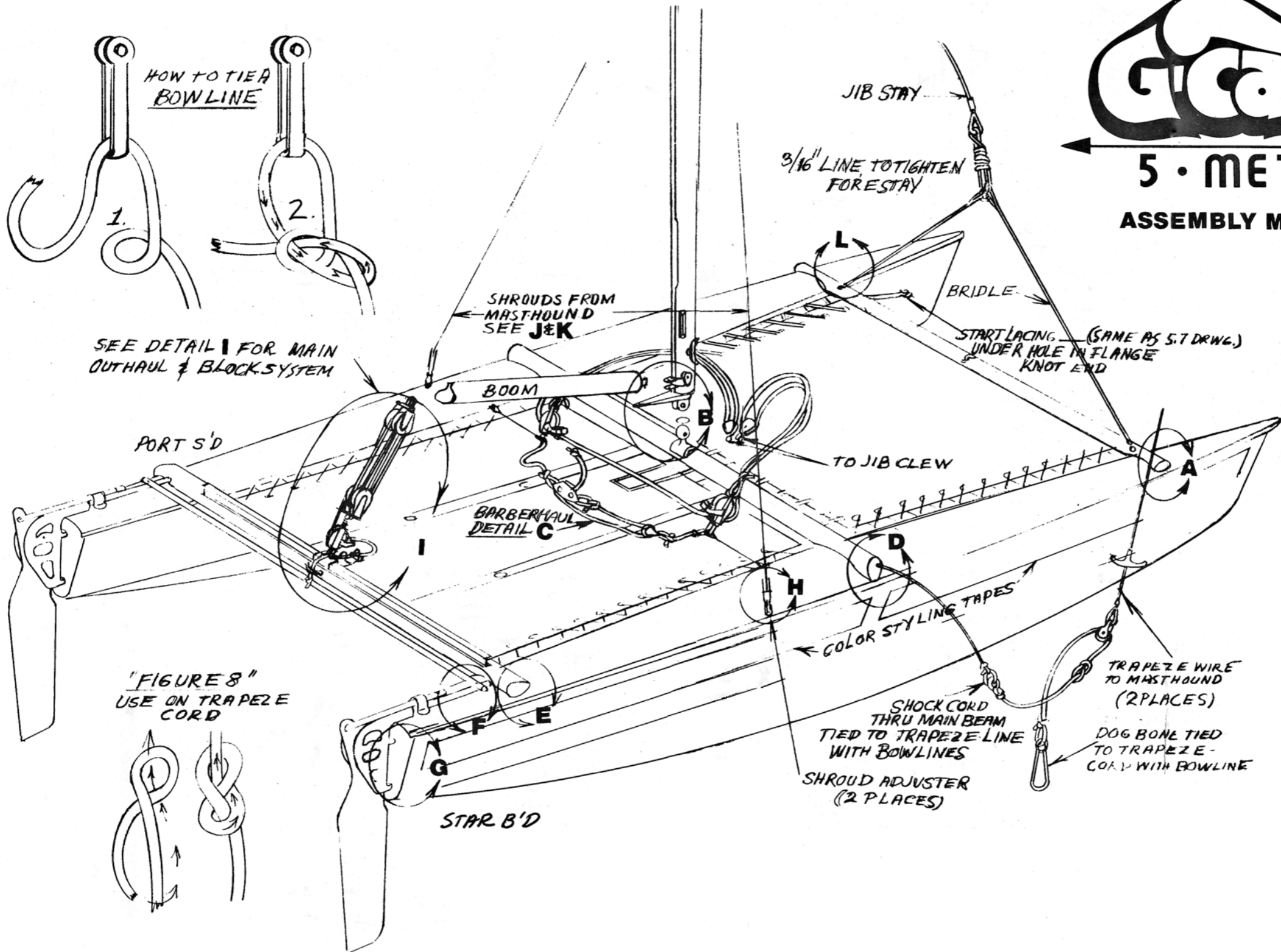


Goat

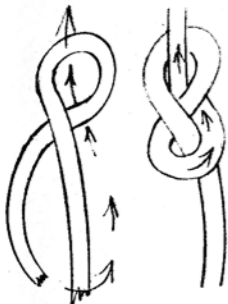
5 · METER
ASSEMBLY MANUAL

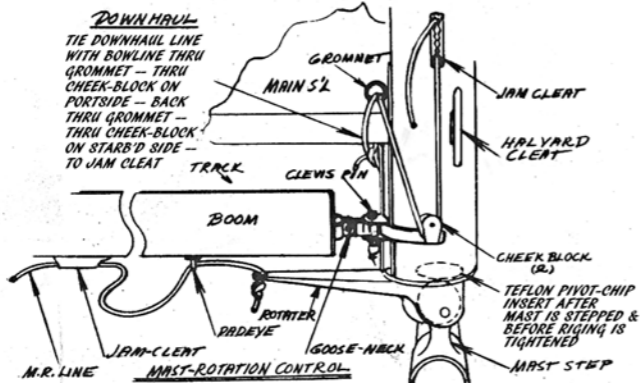
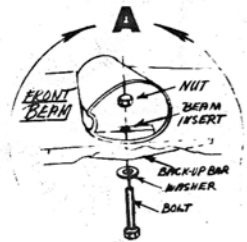


SEE DETAIL I FOR MAIN
OUTHAUL & BLOCK SYSTEM

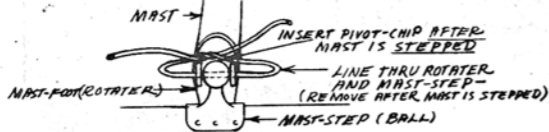


"FIGURES 8"
USE ON TRAPEZE
CORD

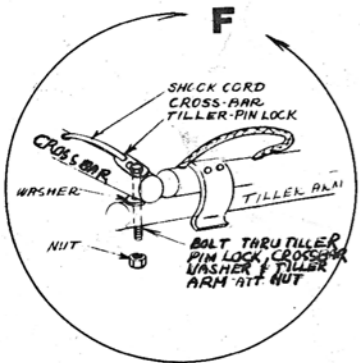




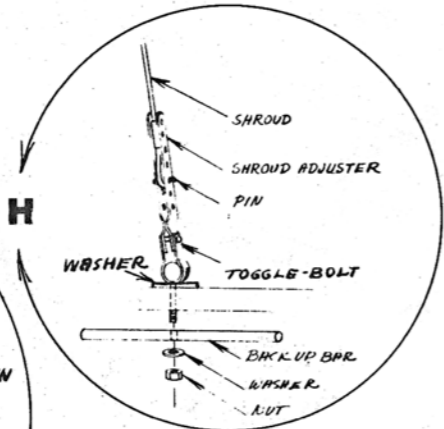
(B) STARBOARD SIDE
MAST STEPPING



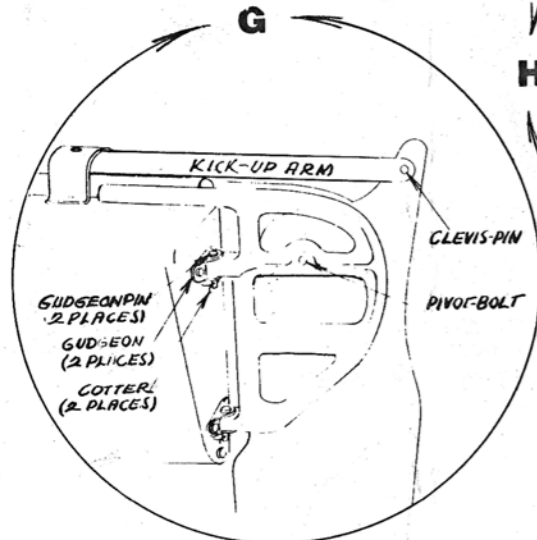
MAKE SURE SHROUDS ARE ATTACHED TO ADJUSTERS & ALL RIGGING IS UNOBSTRUCTED. ATTACH MAST FOOT TO BALL-BASE WITH SHORT LINE. LIFT MAST TO UPRIGHT POSITION. ATTACH FORESTAY BUT INSERT TEFLON PIVOT-CHIP BEFORE TENSION IS APPLIED REMOVE LINE FROM SETP & ROTATOR.



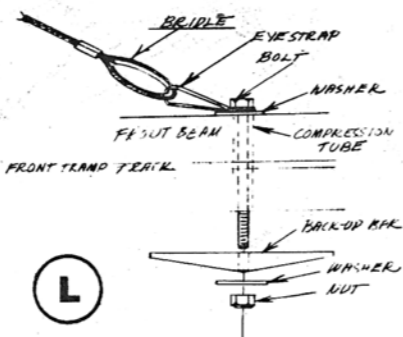
(F)



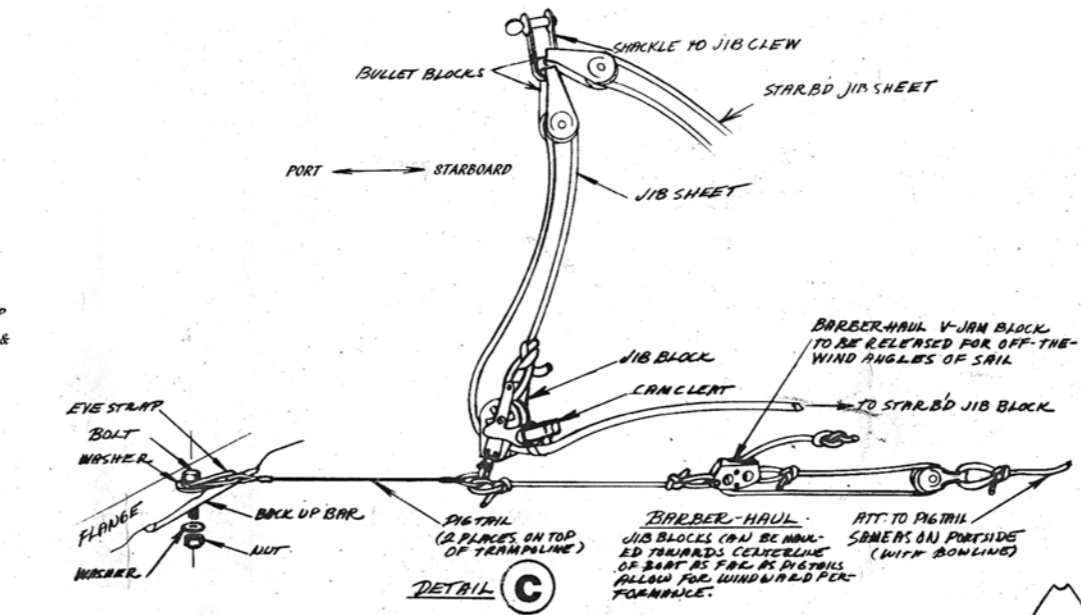
(H)



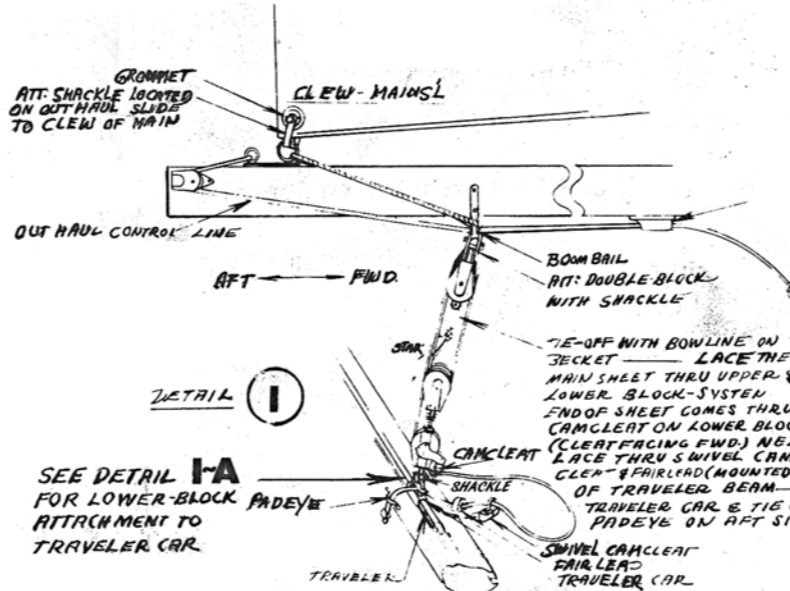
(G)



(L)



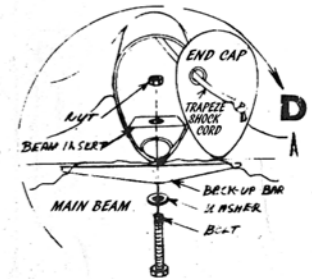
(C)



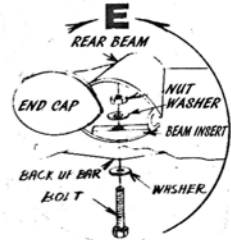
(I)

SEE DETAIL **IA** FOR LOWER-BLOCK ATTACHMENT TO TRAVELER CAR.

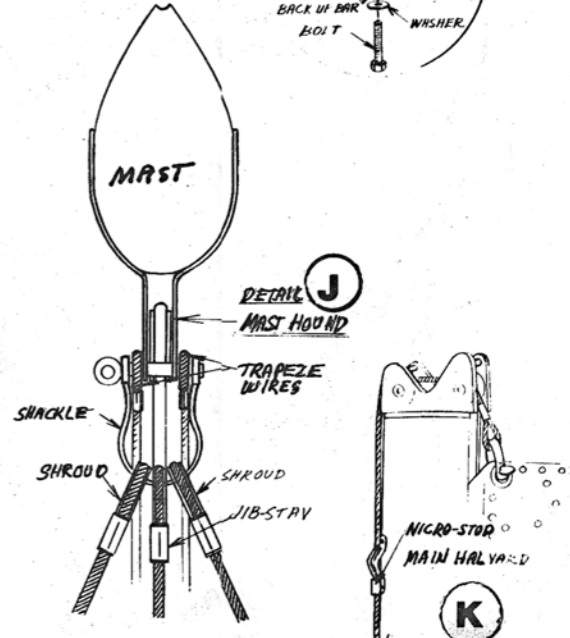
IA



(D)



(E)



(J)

(K)



(K)